



矽瑪科技股份有限公司
Simula Technology Inc.

2019/3/29

Contents

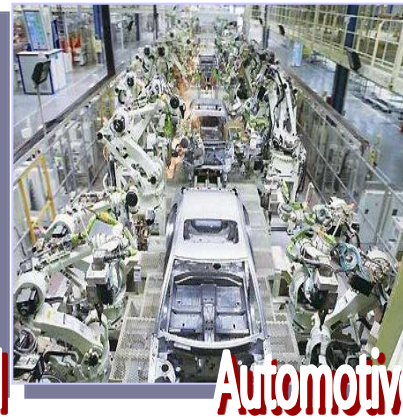
- 公司簡介 Company Overview
- 產品市場說明 Our Products
- 財務資訊 Financial Information

公司簡介 Company Overview

Simula Technology Inc., established in 1990, became Public in 2009, is a Connector & Cable Assy Market leader through excellent R&D and production technologies.

Product • Consumer IO connector [Pogo/USB-C/Audio Jack/DC Jack/Waterproof I/O], Circular connector/Cable, Automotive connector/Cable, Medical connector/cable, dongle, hub and docking.

Certificate • *ISO9000/14000/13485 • IATF16949 • OHSAS18001*



穿戴裝置充電線束 (Power Charger Cable – f co.)

Simula Solution



Application



Power Charger Cable – F Co.

Simula Solution



Application



Product feature

- Simply plug the provided USB cord into a power source and align the pins on the magnetic pad to the metal rings on the back of your Gen 4 or Sport touchscreen smartwatch to charge (up to 80% in one hour).

虛擬實境專用高階高速連接器_VirtualLink

Simula Solution



- USB 3.1 upgrade to Improve VR user experience.
- Reversible connector
- 10Gbps data transfer rate (32.4Gbps, up to 4K @120 Hz with 8bpc color for video)
- 5A/20V charging output

Application

VirtualLink™ Consortium



oculus



VIVE

Resource:<https://sites.google.com/view/virtuallink-consortium/home>

顯示卡使用之配件類產品 (graphics card)

Simula Solution

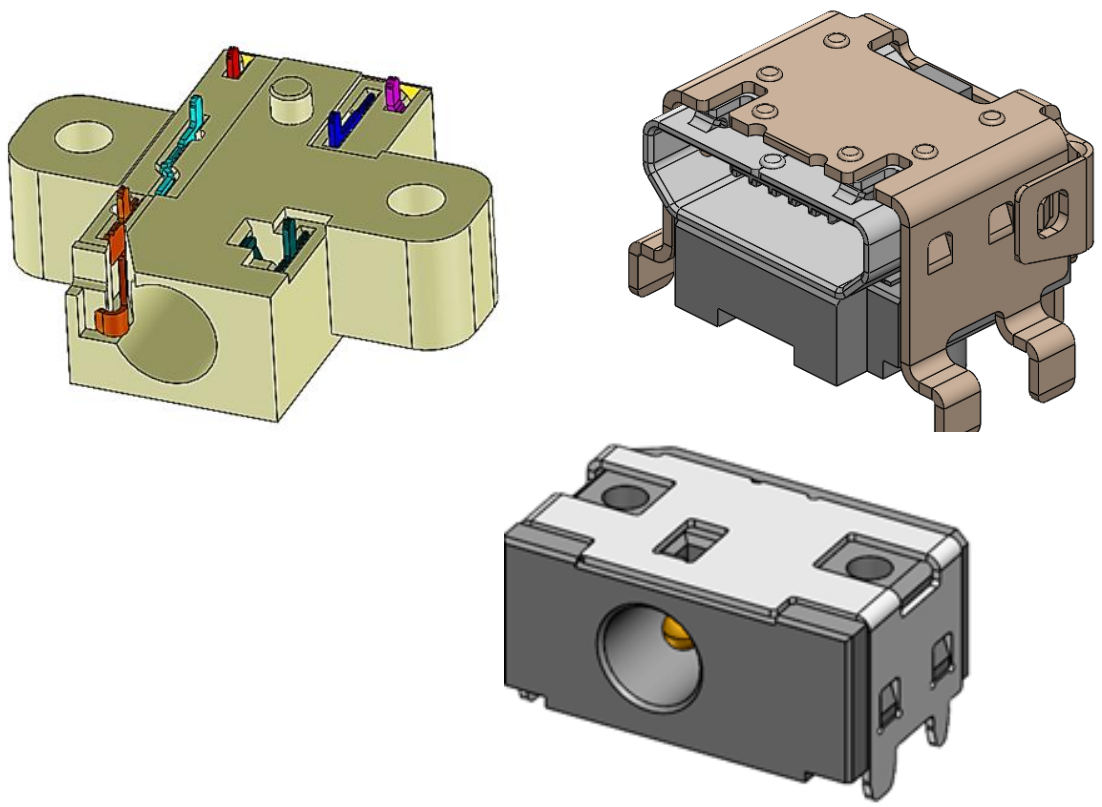


Application



智能音箱使用之信號/電源連接器 (connector – A Co.)

Simula Solution



Application

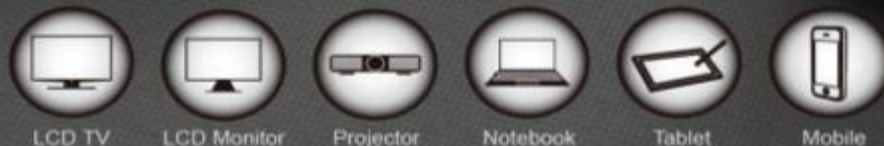


USB-C 配件類產品

Type-C Hub to expand your port connectivity and usability

■ Features

- 2 x USB-A (10 Gbps) output ports (BC1.2/Samsung/Apple charging)
- 2 x USB-C(10 Gbps) output port
- PD downstream charging up to 5V/3A
- PD pass through charging up to 20V/3A
- Cable length 0.15m
- Billboard



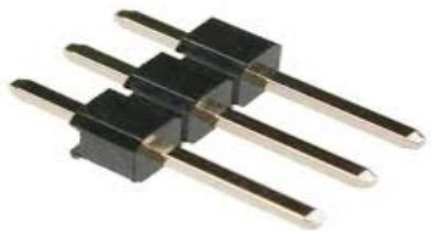
© 2017 Simula Technology Inc. All rights reserved.

www.simulatechnology.com

工業類產品 (Industrial)

Header Series

- 1.0/1.27/2.0/2.54mm Pitch



M Series

- Waterproof
- Blind mating
- Several sizes



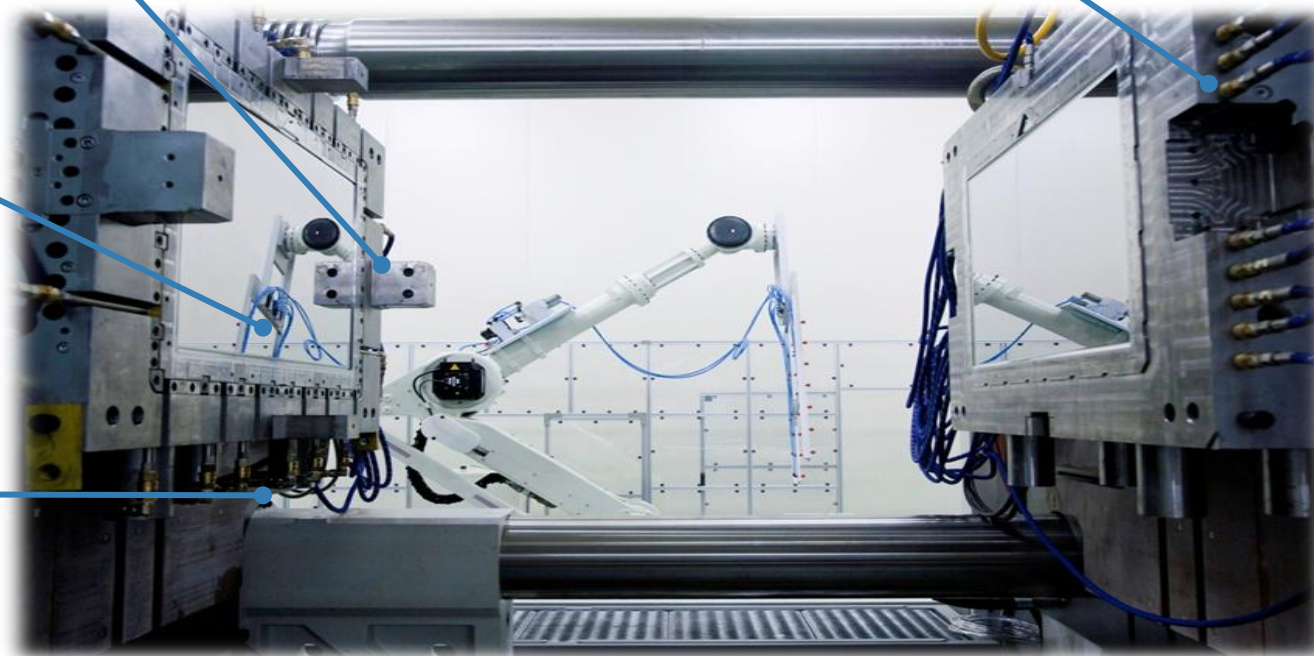
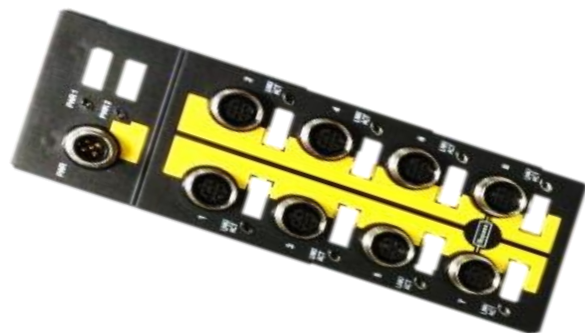
M12 X-CODE

- Waterproof
- X-Coding
- 10Gbps Ethernet



IO BOX

- 10/100Base-TX auto-negotiation
- Full/Half duplex
- Auto MDI/MDI-X function



Note: Related Cable Assembly is also included

工業類產品_複合線束 (Industrial Cable)



隨車電腦診斷系統連接器[OBD connector]

Simula Solution



Application

Bluetooth Wireless OBDII Reader & Scan Tool
Mercedes me Adapter



電子記錄裝置線束(ELD Cable)

Simula Solution



Application



電子紀錄裝置線束(ELD Cable)

OBD2 Extension Cable/
Splitter Y Cable/ Diagnostic Cable

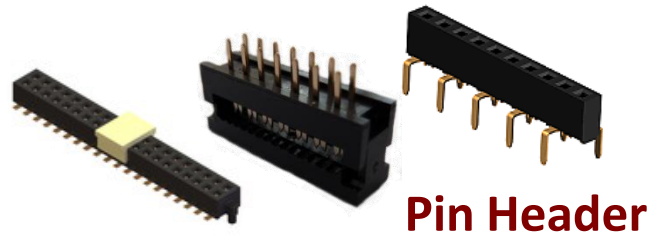


- J1939/J1708 cables
- J1939/J1708 splitter Y cables
- J1939/J1708 pass-through cables
- J1939/J1708 to obd2 or molex or db connector



車聯網產品 (Auto)

ADAS System Cable



Pin Header



HSD Series

Fakra Series

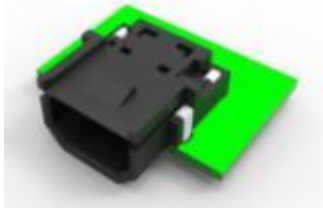


Camera System Cable

AV/USB Series



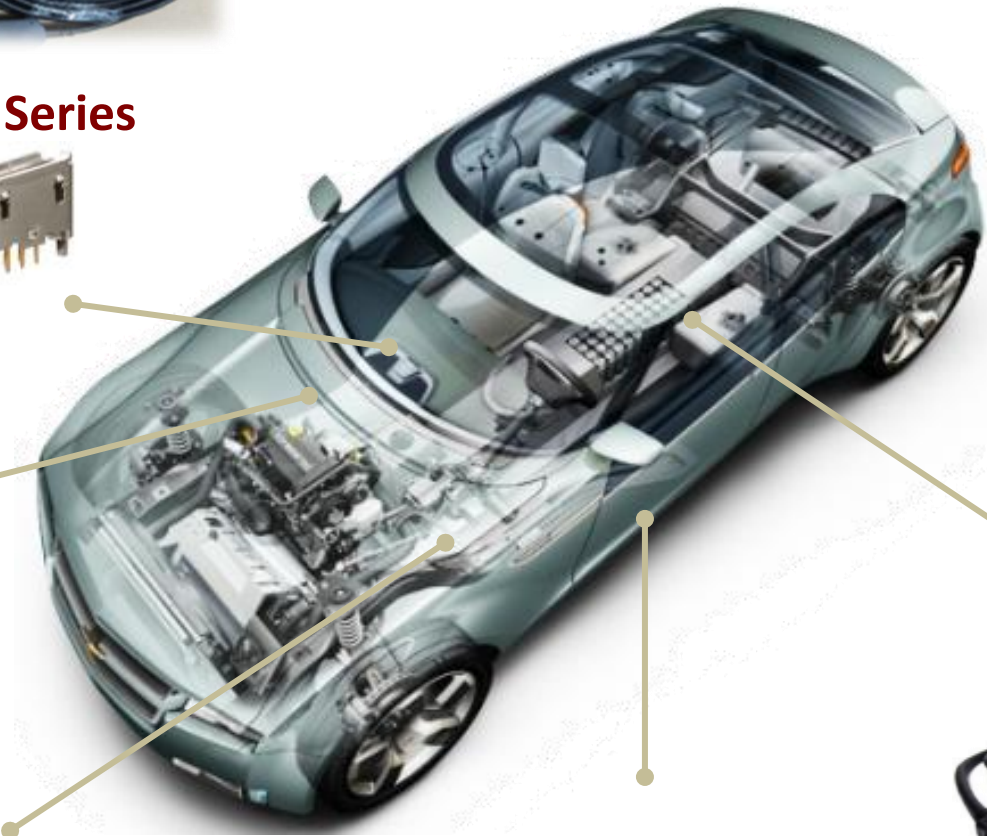
M Series



USB Module Series



DE Series



OBD II Series



MHL Series



HDMI Series

醫療類連接器與線束 (Med. connector and cable)



Power Charging Cable

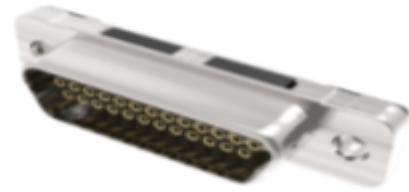
POGO Series

- Magnetic
- High stability contact
- Customized Design

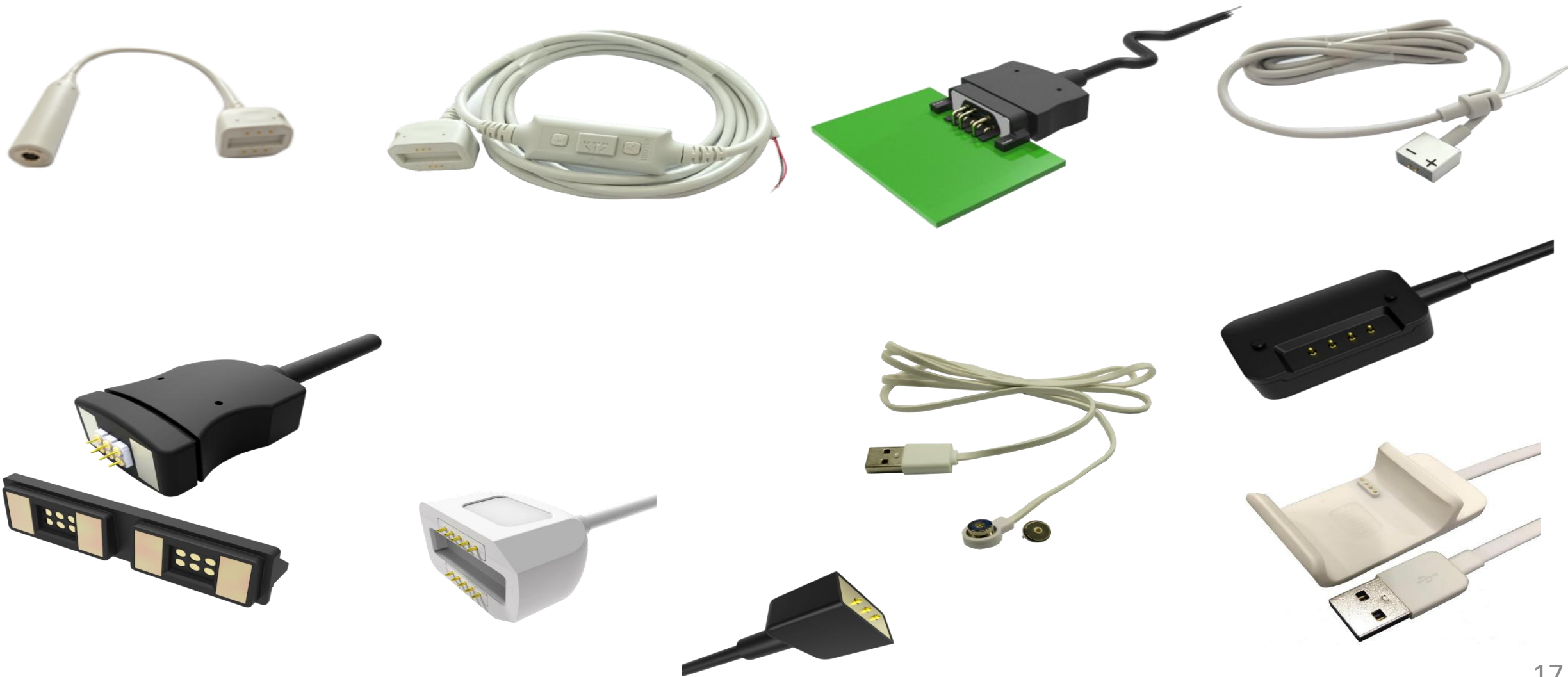


Micro D-Sub Series

- Reverse contact design
- Flex pin contact



醫療類探針磁性連接器與線束 (Med. connector and cable)



Consolidated Income Statement

2018, 2017 & 2016

Unit:KNTD

		2018	2017	2016
營業收入	Sales Revenue, net	1,182,126	937,179	1,139,352
營業毛利	Gross Margin	335,063	218,262	213,922
		28.34%	23.29%	18.78%
營業費用合計	Operating Expenses	272,187	275,828	337,169
營業淨利(損)	Operating Income (Loss)	62,876	(57,566)	(123,247)
稅前淨利	Income before Tax	68,506	(130,094)	(141,669)
所得稅費用	Tax Expense	16,815	3,221	1,837
稅後淨利	Net Income	51,691	(133,315)	(143,506)

Consolidated Balance Sheet

Dec. 31, 2018 & 2017

Unit:KNTD

		2018/12/31	2017/12/31			2018/12/31	2017/12/31
現金及約當現金	Cash and Cash Equivalents,	172,642	157,003	短期借款	Short-term Debts	70,000	76,993
應收帳款	Accounts Receivables	297,443	253,731	應付帳款	Accounts Payables	141,123	141,900
存貨	Inventories	155,512	126,259	應付費用	Expense Payables	162,913	148,833
其他流動資產	Other Current Assts	29,082	34,215	其他流動負債	Other Liabilities	39,030	13,796
流動資產合計	Subtotal of Current Assets	654,679	571,208	流動負債合計	Subtotal of Current Liabilities	413,066	381,522
長期投資	Long-term Investments - Equity method	13,675	-	其他非流動負債	Non-Current Liabilities	300	270
固定資產	Fixed Assets	263,902	269,395	負債合計	Total Laibilities	413,366	381,792
無形資產	Intangible Assets	6,095	7,019				
預付設備款	Prepaid Equipments	12,674	22,545	股本	Common Stocks - issued	445,729	445,729
其他資產	Other Assets	10,406	11,057	資本公積	Additional Paid-in Capital	169,411	169,411
非流動資產合計	Subtotal of Non-current Assets	306,752	310,016	累積虧損	Accumulated Deficit	(69,260)	(140,271)
				其他權益	Other Equities	(21,722)	(6,360)
				非控制權益	Non-contralling Interest	23,907	30,923
				權益合計	Total Equities	548,065	499,432
資產總計	Total Assets	961,431	881,224	負債及權益總計	Total Liabilites and Equities	961,431	881,224

Sales by Product

Unit:KNTD

產品分類 Product		2019		2018		2017		2016	
		Amount	%	Amount	%	Amount	%	Amount	%
穿戴式	Wearable	87,313	47.84%	431,870	36.53%	266,633	28.45%	537,659	47.19%
消費性	Consumer	42,361	23.21%	432,576	36.59%	458,513	48.92%	457,815	40.18%
車用、醫療 及工業	Auto, Med., Industrial	46,434	25.44%	258,098	21.83%	113,378	12.10%	84,430	7.41%
其他	Others	6,393	3.50%	59,582	5.04%	98,655	10.53%	59,448	5.22%
總計	Total	182,502	100.00%	1,182,126	100.00%	937,179	100.00%	1,139,352	100.00%
2019系統計至2019/02資料									
2019 is subtotal of Jan. & Feb. only.									

Income Statement

Jan. ~ Feb., 2019 & 2018

(unaudit)

Unit:KNTD

科目	Account	Jan. ~ Feb., 2019		Jan. ~ Feb., 2018	
營業收入	Sales Revenue	182,501	100.00%	140,793	100.00%
營業成本	Cost of Good Sold	(112,237)	-61.50%	(104,374)	-74.13%
營業毛利	Gross Margin	70,264	38.50%	36,419	25.87%
營業費用	Operationg Expenses	(46,668)	-25.57%	(42,619)	-30.27%
營業利益	Operating Income (Loss)	23,596	12.93%	(6,200)	-4.40%
營業外淨收(支)	Non-Operating Income (Loss)- net	1,553	0.85%	(4,154)	-2.95%
稅前淨利	Income before Tax	25,149	13.78%	(10,354)	-7.35%
所得稅費用	Tax Expense	(1,321)	-0.72%	0	0.00%
稅後淨利	Net Profit	23,828	13.06%	(10,354)	-7.35%
每股盈餘(元)	EPS	0.54		(0.24)	

註：以上2019/01~02自結損益表與去年（2018）同期比較數之財務資料係本公司自結損益資料，未經會計師查核(閱)，僅供投資人參考。

Thank you

