



Simula

Cables
&
Connectors



Since 1990





AGENDA

01 About us

02 Our team

03 Business segments & service

04 Product Roadmap

05 Core competencies

06 Quality certifications

07 Why Simula?



Simula
Since 1990

About us

NO. OF EMPLOYEES



550

Revenue 2022

141M USD

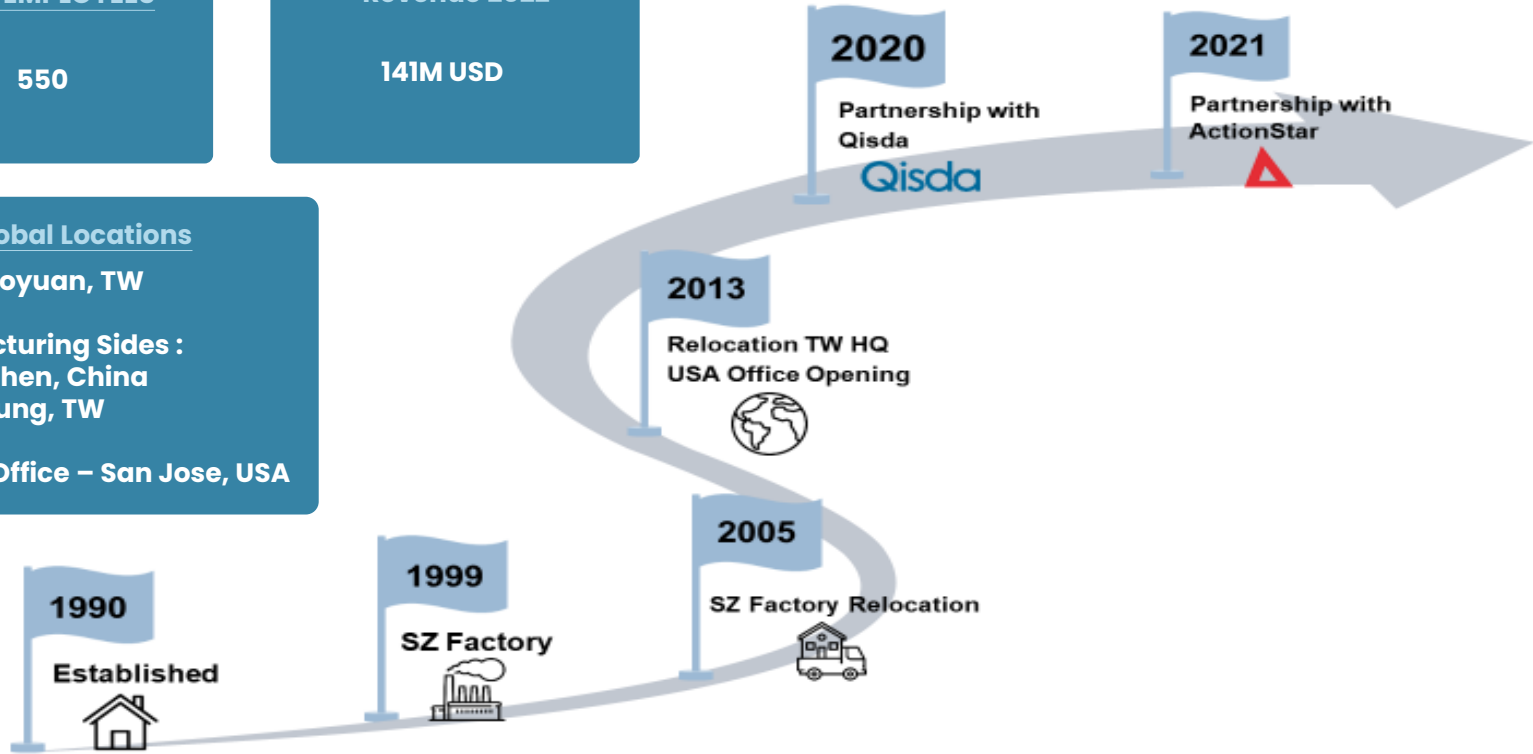
Global Locations

H.Q - Taoyuan, TW

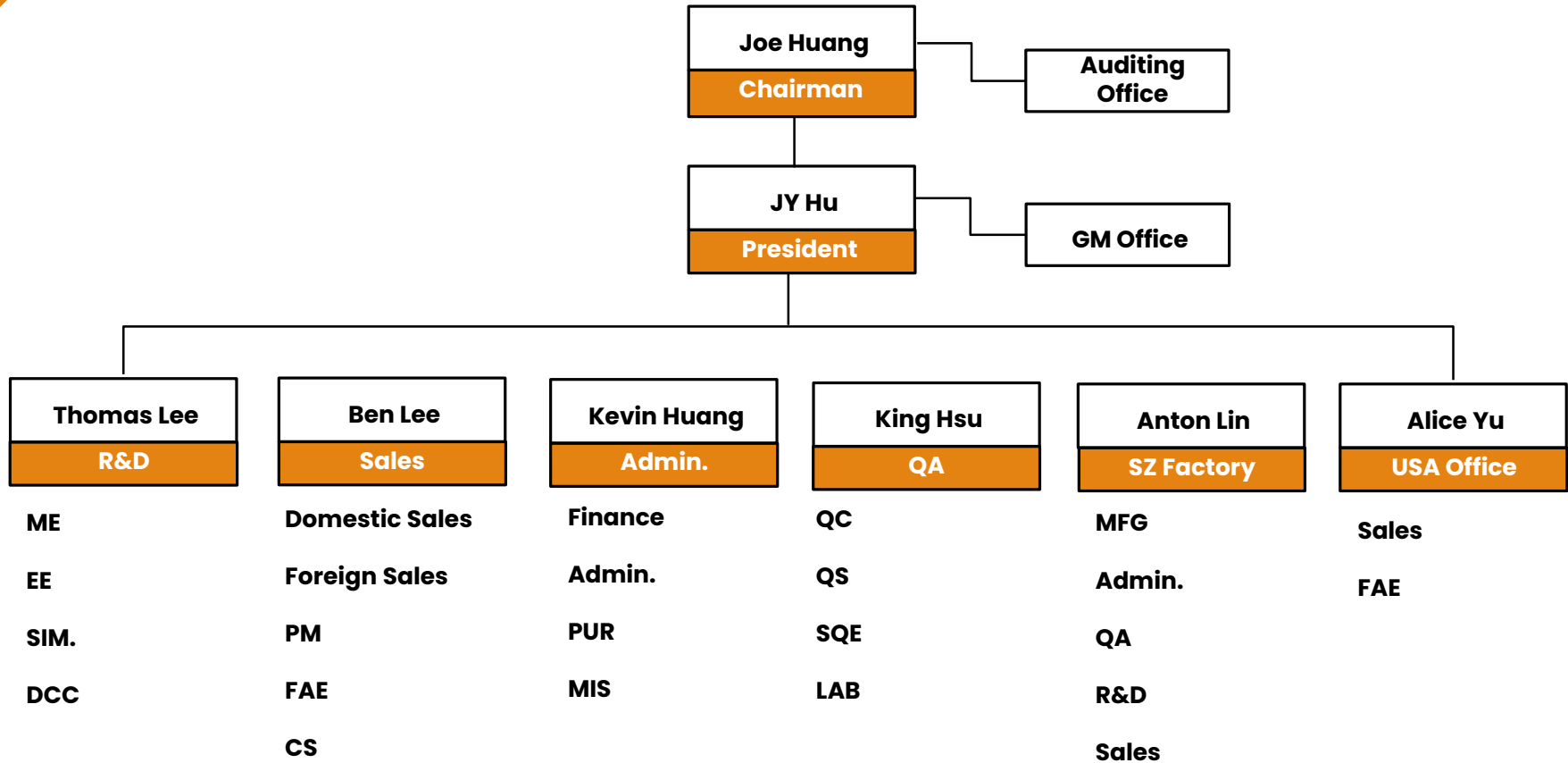
Manufacturing Sides :

- 1) Shenzhen, China
- 2) Taichung, TW

Branch Office - San Jose, USA



Our Team



Business Segments & Service

Consumer

USB 4 / HDMI 2.1 / DP 2.0

Metaverse

Product Features & Performance

1. Resistance and integrity during assembly
2. 4 N to 20 N after 10000 plugging times
3. Excellent strength, the stronger over 100,000 times bending
4. Compliant to environmental specification
5. Robust shield design for extra EMI protection

Smart & Wearable

Redefining the Limits of POGO Technology

Product Features & Performance:

1. Easy & Fast Connection
2. Reversible
3. High Mating Cycles

Combining POGO and Magnet

PCBA Circuit and Layout

Mechanical Parts Design

Cable Construction and Development

Fleet Management

Rugged, Reliable, Field Proven

Product Features & Performance

1. Low Profile Connectors
2. Sealable (IP69K)
3. Hybrid Connector (Power & Signal)
4. Primary Locking
5. Heavy Duty environments
6. Easy Installation
7. Customization

-40° to +85° C
-40° to +105° C
-40° to +125° C

IATF 16949:2016 COMPLIANT

Industry

Harsh Environment, Waterproof, High-Speed

Product Features & Performance

1. Ultra-miniature solution
2. High-Speed data transmission
3. Harsh-environment applications
4. Highest waterproof rating
5. X-coded for 10Gbps Ethernet(M12)

Medical

Disposable, Customized, Biocompatible

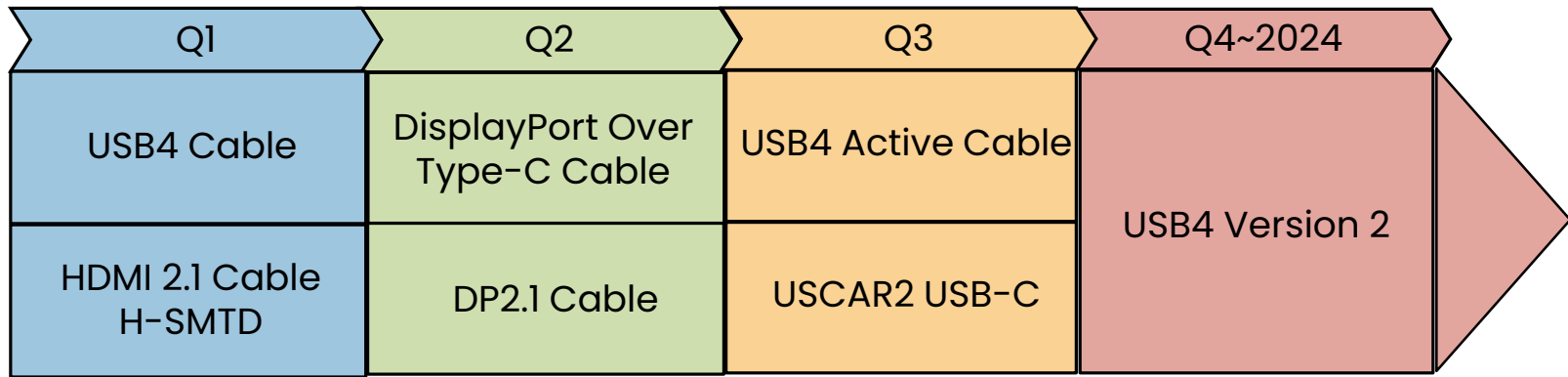
Product Features & Performance

1. High-speed and high-density technology
2. Sterilizable and autoclavable
3. EMC/EMI shielding
4. Glass fiber, hybrid, and non-magnetic options
5. Waterproof (IP50, IP67, IP68) and hermetically sealed options
6. Optionally with cable bend relief and cable overmoldings

MEDICAL DEVICES
ISO 13485:2016
REGISTERED SUPPLIER

Product Roadmap

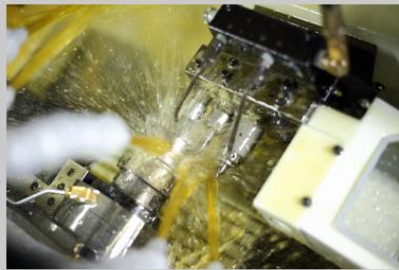
2023



TW Production Line Introduction (QSCC)



2014	2nd Plant Expansion Completed
2015	OEM in radiation therapy
2016	FDA Audited – OEM orthopedic products
2017	Certification: TFDA - Ear Thermometer
2018	Certification: IATF 16949
2019	Certification: MDA-Malaysia – Ear Thermometer Certification: TFDA – High intensity focused ultrasound system
2020	Escalation to Tier1 supplier in automotive industry



PRECISION MACHINING

Single spindle CNC Tool type lathes



PLASTIC INJECTION MOLDING

ARBURG injection molding machine



ASSEMBLY

QSC provides customized professional assembly service



MOLD MANUFACTURING AND MAINTENANCE

Mold Manufacturing

TW Production Line #1(USB4 cable)

Automatic Tinning Machine



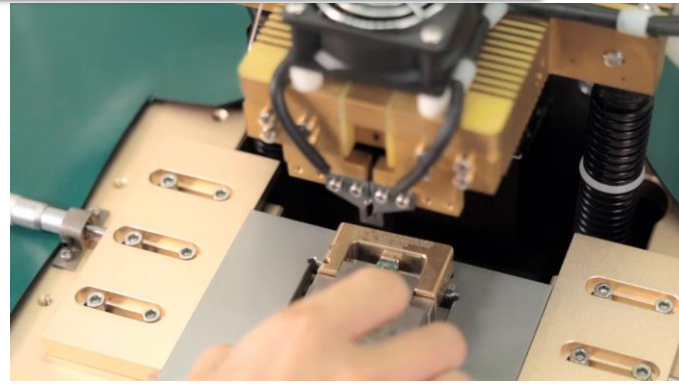
Metal Laser Welder



Metal Laser Cutting Machine



Automatic Hotbar Machine



TW Production Line #2(ELD Cable)

Auto Production

Cable Cutting &
Peeling

Auto Production

PCBA Soldering

Quality Ensure

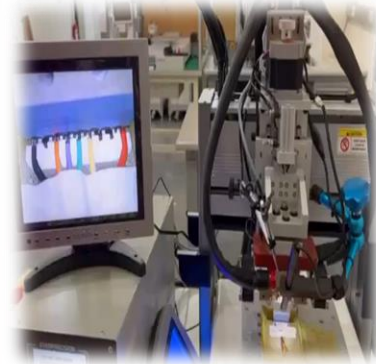
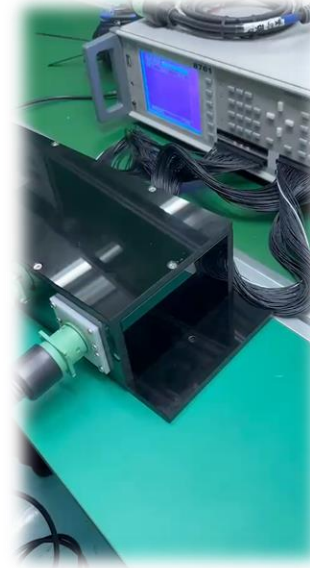
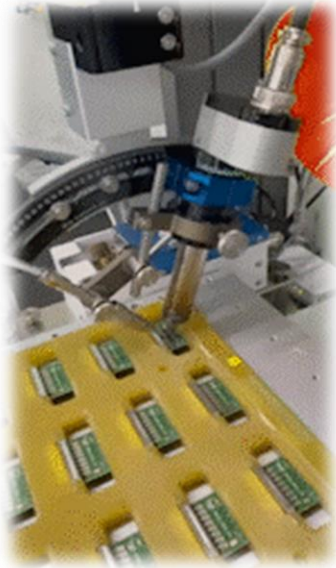
Crimping
Pressure Detection

Quality Ensure

Generate
Traceability Data

Auto Production

Wire attach on PCB
(Hot Bar)



Core Competencies



ME



ID



EE



SIM.



VER.

Connector development ability

Common ELD & other Automotive Conn.
 Circular Conn.
 OBDII Conn.
 High power Conn.
 Waterproof Conn.
 Ethernet Conn.
 Customized Conn.

Cable development ability

Wire Harness
 Common Cable
 Coaxial & Fiber Cable
 UV Resistance Cable
 Chemical Resistance Cable
 Customized Cable

PCBA development ability

Schematic Design
 Layout Design
 RF Design

Test ability

TDR + Network analyzer
 IC Test equipment
 FC Test equipment
 Programing Jig
 Special Test Jig
 Software / Hardware Design
 Customized Test equipment

- 63+ R&D and 3 FAE for the Worldwide team (TW*24 + CN*39)
- Over 50% of R&D has more than 10 years of experience in connector/cables industry
- Taipei & USA: New product development & advanced technology
- Shenzhen: MP, process engineers, cable development

Quality Certifications



Certification Version	体系名称	Name of certification	Certification Number	First Approved	Latest Date	Effective Date
ISO 9001 : 2015	质量管理体系	Quality Management System	117527/A/0001/UK/ZH	2021	2021/7/28	2024/7/27
IATF16949:2016	汽车质量管理体系	Automobile industry quality management system	116320/A/0001/SM/ZH	2014	2021/10/10	2024/10/9
ISO13485:2016	医疗器械质量管理体系	Medical device-Quality management system-requirements for regulatory	INV22MD025R0	2016	2022/5/20	2025/5/19
QC080000:2017	有害物质管理体系	Hazardous Substance Process Management	INV22QC026R0	2010	2022/7/22	2025/7/21
ISO14001:2015	环境管理体系	Environmental Management System	2052020E50136R0M	2005	2020/8/13	2023/8/12

WHY SIMULA ?



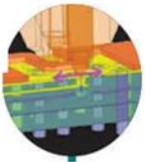
Vertical Integration



Connector



Cable

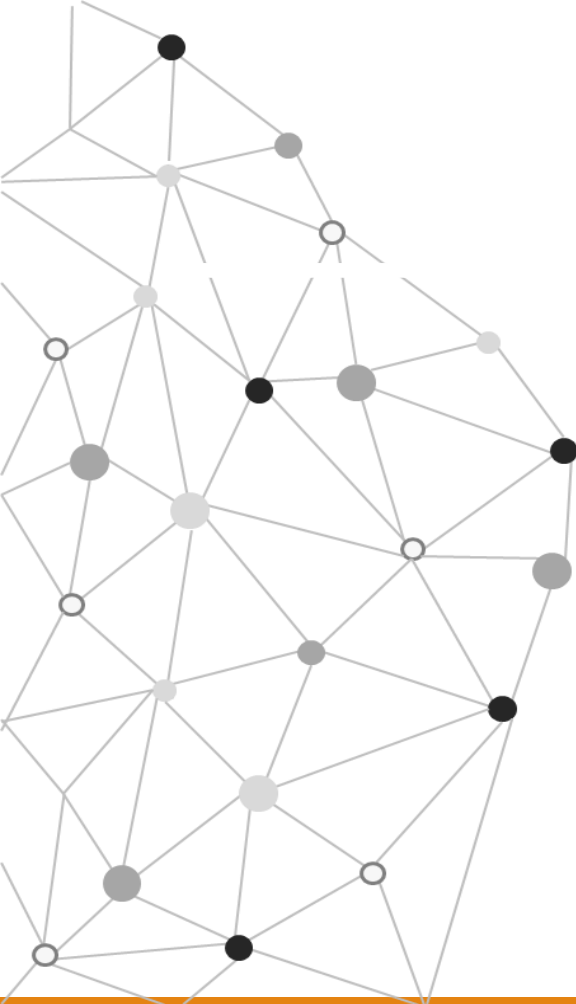


Technical Support



Horizontal Integration





Simula

Cables
&
Connectors



THANKS

Since 1990

