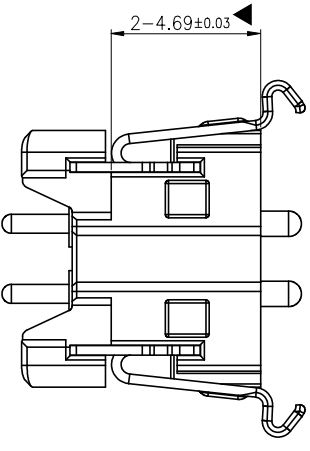
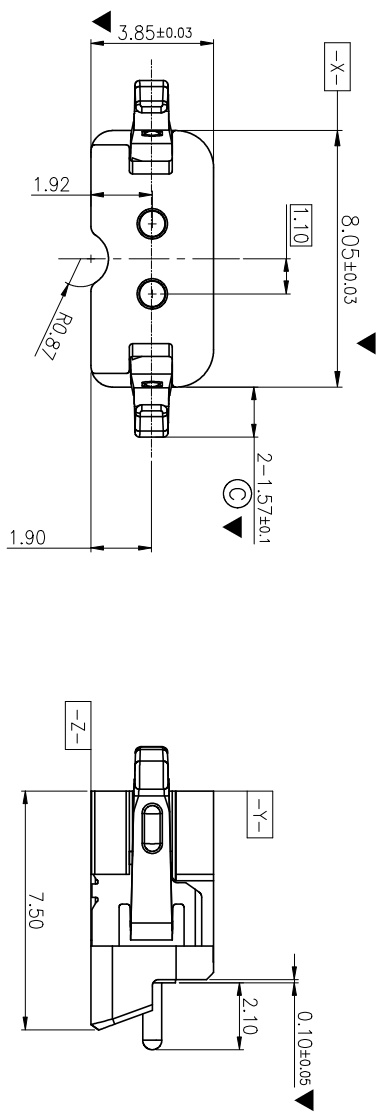
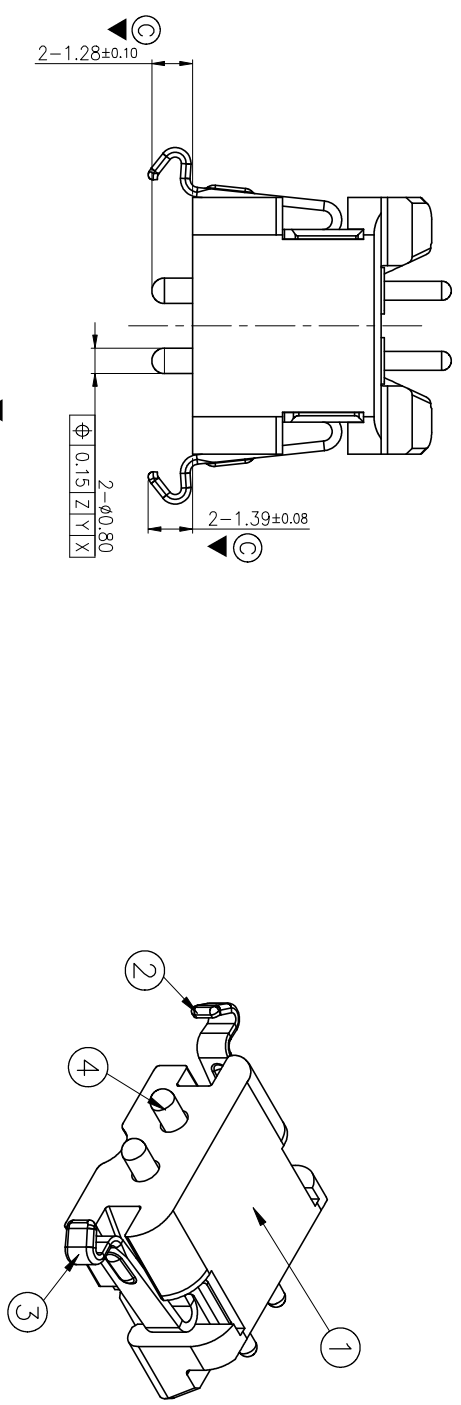


REV.	DCN. NO.	ISSUED
Δ	PDR-13N335 DCN-1412028	2014/12/22 Sky Mo

**Simula Technology Inc.**  
 JAN 09, 2015  
**D.C.C. ISSUED**



**Notes:**

1. Electrical Characteristics:
  - 1-1. Rating: DC 5V , 0.25A
  - 1-2. Contact Resistance: 50mohm Max.
  - 1-3. Insulation Resistance: 100Mohm Min. Measure By 500 VDC.
2. Mechanical Characteristics:
  - 2-1. Insertion Force: 35N Max.
  - 2-2. Extraction Force: 5N Min.
3. Durability Test: 5,000 Cycles.
4. For Reflow Soldering Lead-Free Process.
5. Soldering Heat Resistance Reflow Soldering 260 C.
6. Packaging: T/R
7. Critical Dimension : ▼
8. CPK Dimension : ◎

ITEM	DESCRIPTIONS	MATERIAL	FINISH	Q'TY	NOTE
④	POGO PIN	BRASS	SOLDER AREA: 5 u" Au over, 50 ~ 100u"Ni CONTACT AREA : 10 u" Au over, 50~100 u"Ni	2	
③	LATCH 02	SUS 304-H	T=0.3, Ultrasonic degreasing cleaning	1	
②	LATCH 01	SUS 304-H	T=0.3, Ultrasonic degreasing cleaning	1	
①	HOUSING	LCP	UL94V-0-BLACK	1	

UNLESS OTHERWISE SPECIFIED DIMENSION ARE IN MILLIMETERS TOLERANCE ARE : FRACTION DECIMALS ANGLES

.X ± 0.20	.X° ±5°	APPROVALS	DATE
.XX ± 0.15	.X° ±3°	DRAWN Sky Mo	2014/12/22
		CHECKED ANDY	2014/12/22
		APPROVED JIM	2014/12/22

**simula** Superior Technology Solution Provider

PART NO. MP841B-2100-402  
 TITLE ASSEMBLY DRAWING  
 2 PIN POGO CONNECTOR

SCALE 4:1 UNIT MM SHEET 1/1

CONFIDENTIAL

CUSTOMER