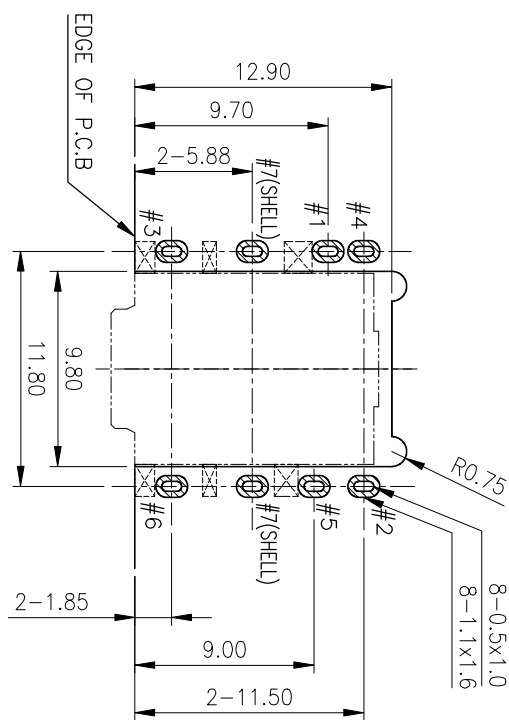
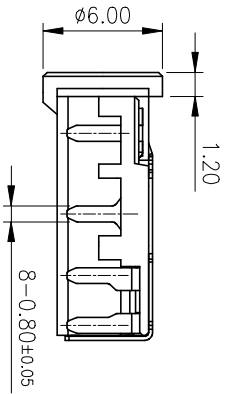
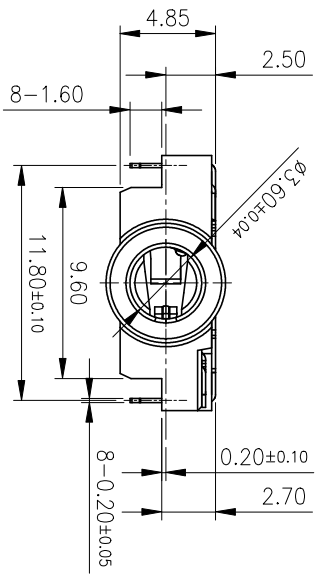
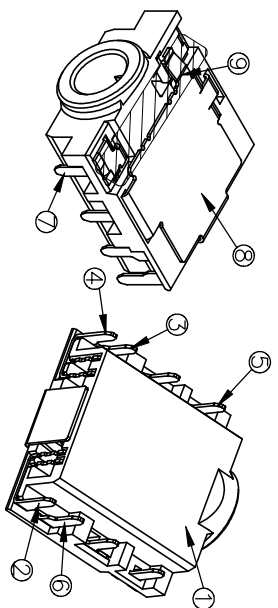
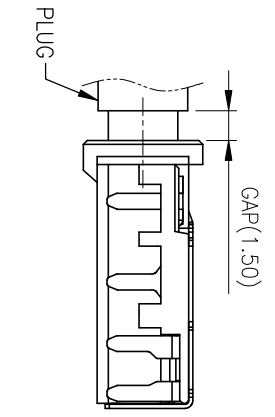
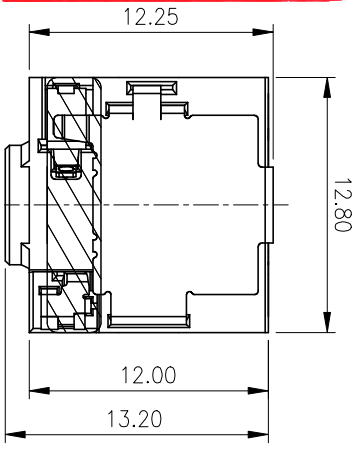
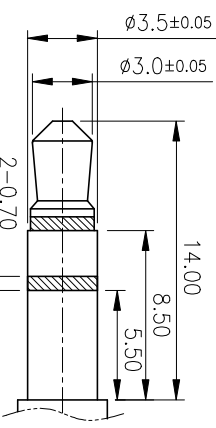
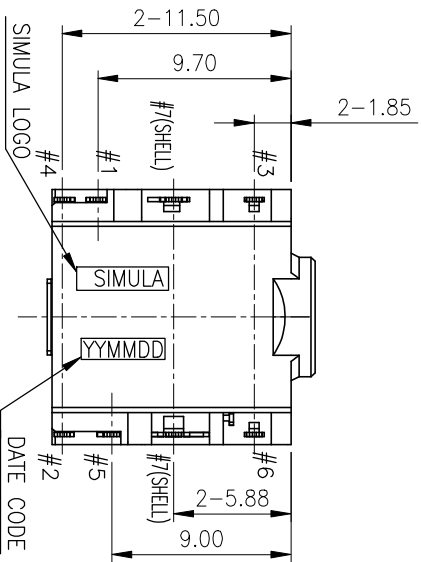
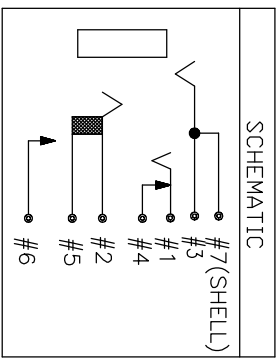


**Simula Technology Inc.**  
**APR 09, 2012**  
**D.C.C. ISSUED**



RECOMMENDED PADS LAYOUT  
 <TOP VIEW>

NOTE : TOLERANCE FOR PCB LAYOUT IS ± 0.05



YMMDD(BLACK)  
 DD: DAY (01~31)  
 MM: MONTH (01~12)  
 YY: YEAR (11~ )

ORDER INFORMATION:

PACKAGING	PART NO.
T/R	AJ3A2B-6050-422

ITEM	DESCRIPTIONS	MATERIAL	FINISH	Q'TY	NOTE
①	W/LAR	KAPTON		1	0.075L
②	SHELL	COPPER ALLOY	NI	1	0.2t
③	ON CONTACT	COPPER ALLOY	G/F	1	0.2t
④	OS CONTACT	COPPER ALLOY	G/F	1	0.2t
⑤	GND CONTACT	COPPER ALLOY	G/F	1	0.2t
⑥	T SHUNT	COPPER ALLOY	G/F	1	0.2t
⑦	T CONTACT	COPPER ALLOY	G/F	1	0.2t
⑧	R CONTACT	COPPER ALLOY	G/F	1	0.2t
⑨	HOUSING	HIGH TEMP PLASTIC	U94V-0	1	0.2t
⑩			BLACK	1	BLACK

UNLESS OTHERWISE SPECIFIED DIMENSIONS ARE IN MILLIMETERS FRACTION DECIMALS ANGLES



PART NO. AJ3A2B-6050-422

TITLE: Ø3.5mm AUDIO JACK  
 3POLE-2SWITCH(NORMAL OPEN)

APPROVALS	DATE	TITLE
DRAWN: Simon Wen	2012/04/05	Ø3.5mm AUDIO JACK
CHECKED: Quail Lo	2012/04/05	3POLE-2SWITCH(NORMAL OPEN)
APPROVED: K Lee	2012/04/05	



CONFIDENTIAL	SCALE	UNIT	SHEET
	2.5:1	MM	1/1

CUSTOMER