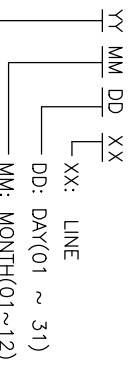
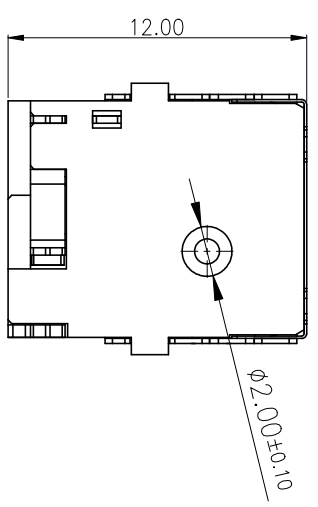
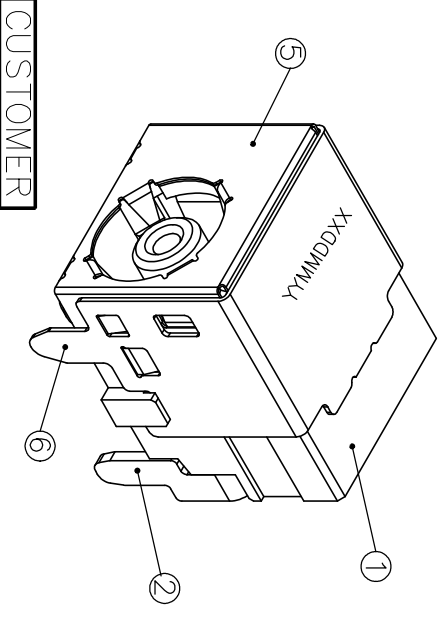
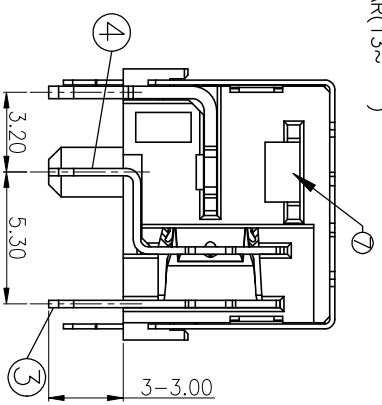
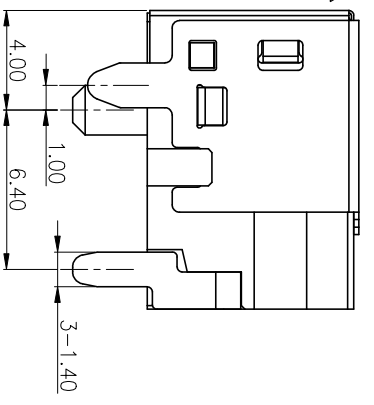
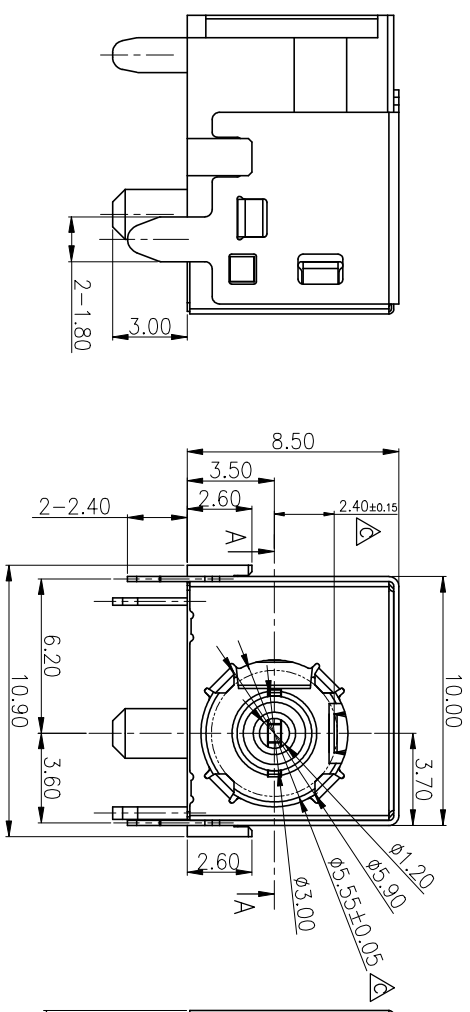
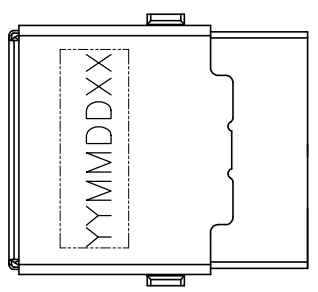
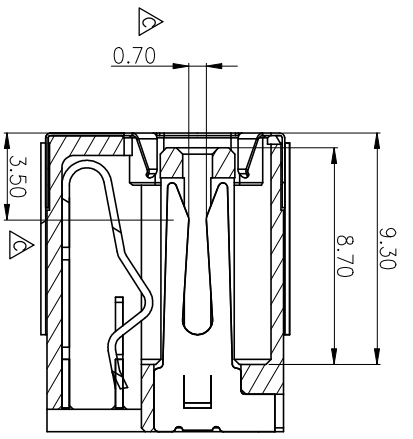


REV.	ECN. NO.	ISSUED
△	PDR-13N340	2014/09/01
△*	DCN-1409001	CL 2015/05/21
△*	ECN-1505006	CL 2015/05/21

- NOTES:
1. ELECTRICAL CHARACTERISTICS:
- 1-1 CONTACT RESISTANCE: 50mΩ MAX. (INITIAL)
100mΩ MAX. (FINAL)
 - 1-2. DIELECTRIC WITHSTANDING VOLTAGE: 500V AC FOR ONE MINUTE.
 - 1-3. INSULATION RESISTANCE: 100MΩ MIN. MEASURED BY 500V DC
2. MECHANICAL CHARACTERISTICS:
- 2-1. PLUG INSERTION FORCE : 4.0 MAX KGS.
 - 2-2. PLUG WITHDRAWAL FORCE : 1.0 MIN KGS.
3. DURABILITY TEST:5,000 CYCLES .
4. FOR REFLOW SOLDERING LEAD-FREE PROCESS.
5. SOLDERING HEAT RESISTANCE REFLOW SOLDERING 260 °C.
6. PACKAGING: TAPE&REEL.
7. DATE CODE: YY MM DD XX



Simula Technology Inc.
JUN 26. 2015
D.C.C. ISSUED



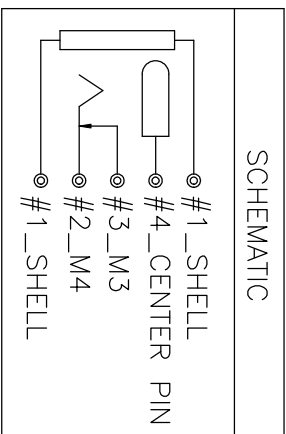
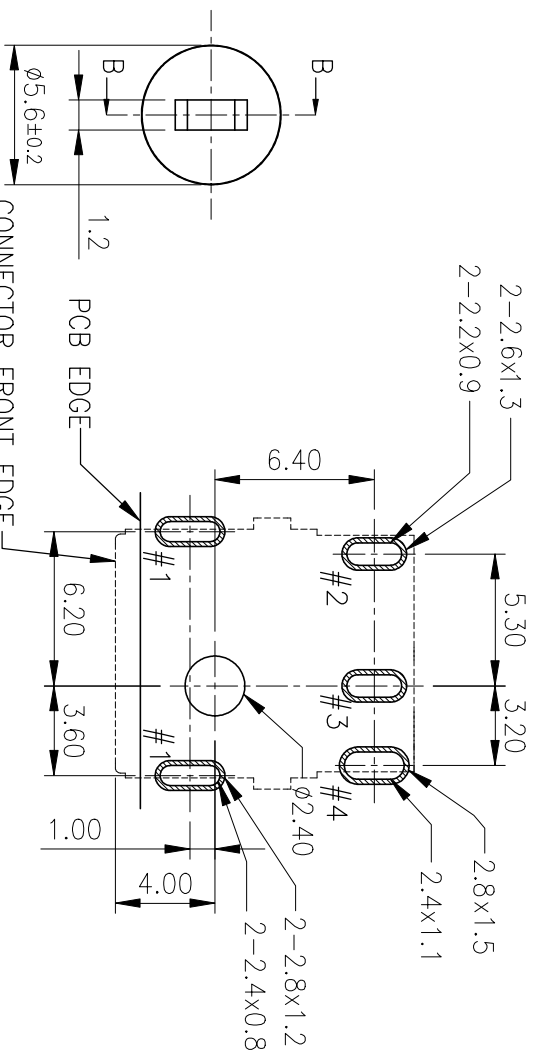
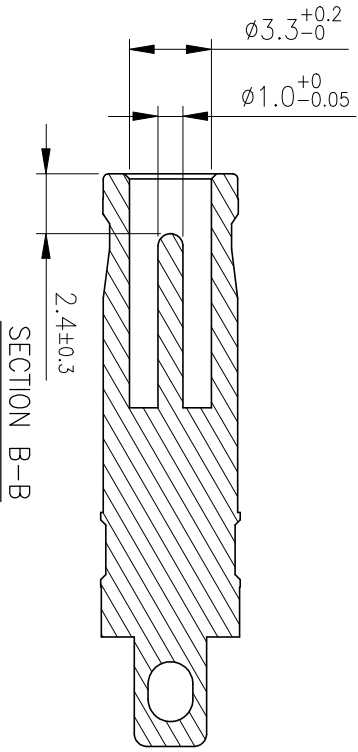
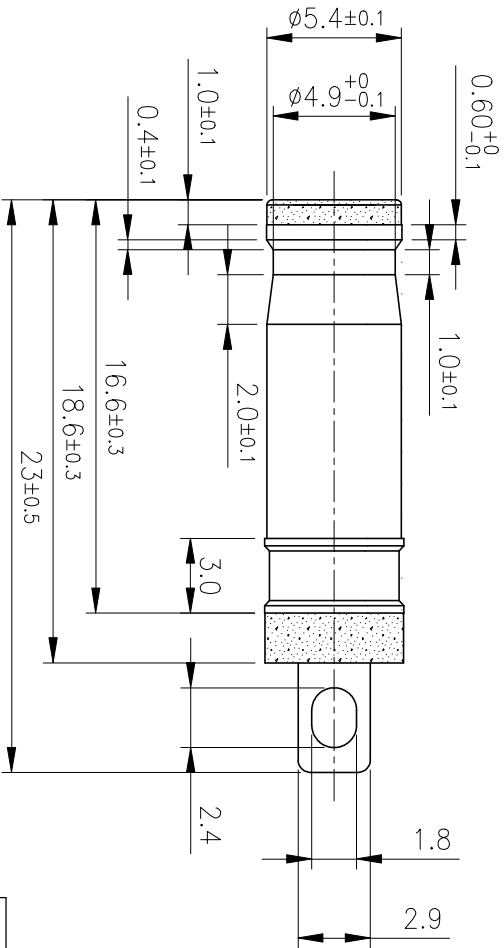
ITEM	DESCRIPTIONS	MATERIAL	FINISH	Q'TY NOTE
①	DUMMY PIN	STAINLESS STEEL 0.5t		1
②	SHELL	COPPER ALLOY 0.3t	TIN 100u" MIN. OVER NI 50u" MIN.	1
③	SHELL COVER	STAINLESS STEEL 0.1t	BLACK NI 30u" MIN.	1
④	M3	COPPER ALLOY 0.3t	SOLDERABLE NI 50~180u" MIN.	1
⑤	M4	COPPER ALLOY 0.3t		1
⑥	CENTER PIN	COPPER ALLOY 0.5t	TIN 100u" MIN. OVER NI 50u" MIN.	1
⑦	HOUSING	HIGH TEMP PLASTIC	UL94V-0 BLACK	1

<p>UNLESS OTHERWISE SPECIFIED DIMENSIONS ARE IN MILLIMETERS FRACTION DECIMALS ANGLES</p>		<p>APPROVALS</p>		<p>DATE</p>		<p>TITLE</p>	
<p>■ LEAD-FREE</p> <p>■ HALOGEN-FREE</p>	<p>.X ± 0.2</p> <p>.XX ± 0.15</p>	<p>XX</p> <p>XX</p>	<p>±0.2</p> <p>±0.3</p>	<p>DRAWN</p> <p>CL</p>	<p>2015/05/21</p>	<p>SIZE</p> <p>A4</p>	<p>DC POWER JACK</p>
<p>CHECKED</p> <p>ANDY</p>		<p>APPROVED</p> <p>JIM</p>		<p>2015/05/21</p>		<p>SCALE</p> <p>2.5:1</p>	
<p>3rd ANGLE PROJECTION</p>		<p>CONFIDENTIAL</p>		<p>UNIT</p> <p>MM</p>		<p>SHEET</p> <p>1/4</p>	

PART NO. AV296B-3100-412

CUSTOMER

Simula Technology Inc.
JUN 26, 2015
D.C.C. ISSUED



RECOMMENDED PADS LAYOUT T=1.6
 <TOP VIEW>
 TOLERANCE FOR PCB LAYOUT IS ±0.05

ITEM	DESCRIPTIONS	MATERIAL	FINISH	Q'TY	NOTE
1	DUMMY PIN	STAINLESS STEEL 0.5t		1	
2	SHELL	COPPER ALLOY 0.3t	TIN 100u" MIN. OVER NI 50u" MIN.	1	
3	SHELL COVER	STAINLESS STEEL 0.1t	BLACK NI 30u" MIN.	1	
4	M3	COPPER ALLOY 0.3t	SOLDERABLE NI 50~180u" MIN.	1	
5	M4	COPPER ALLOY 0.3t	COPPER ALLOY OVER NI 50u" MIN.	1	
6	CENTER PIN	COPPER ALLOY 0.5t	TIN 100u" MIN. OVER NI 50u" MIN.	1	
7	HOUSING	HIGH TEMP PLASTIC	UL94V-0 BLACK	1	

UNLESS OTHERWISE SPECIFIED DIMENSIONS ARE IN MILLIMETERS FRACTIONS DECIMALS ANGLES

LEAD-FREE **HALOGEN-FREE**

.X ± 0.2	.X ± 0.2	.X ± 0.2	.X ± 0.2
.XX ± 0.15	.XX ± 0.15	.XX ± 0.15	.XX ± 0.15

APPROVALS

APPROVALS	DATE	TITLE
DRAWN CL	2015/05/21	DC POWER JACK
CHECKED ANDY	2015/05/21	
APPROVED JIM	2015/05/21	

PART NO. AV296B-3100-412

SIZE VERSION C

SCALE 2.5:1

UNIT MM

SHEET 2/4

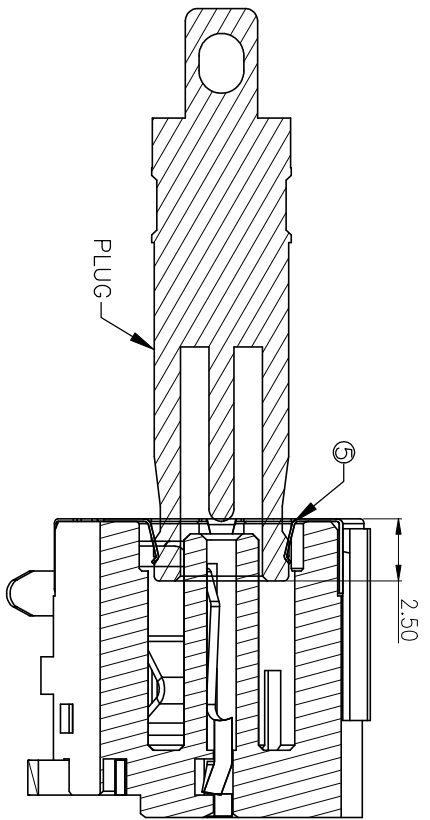
CONFIDENTIAL

REV.	ECN. NO.	ISSUED
Δ	PDR-13N340	2014/09/01
Δ*	DCN-1409001	CL
Δ*	ECN-1505006	CL

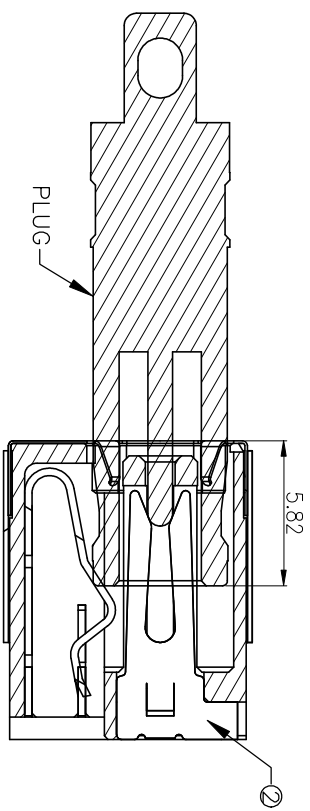
CUSTOMER

REV.	EQN. NO.	ISSUED
Δ	PDR-13N340	2014/09/01
Δ*	DCN-1409001	2015/05/21
Δ*	ECN-1505006	2015/05/21

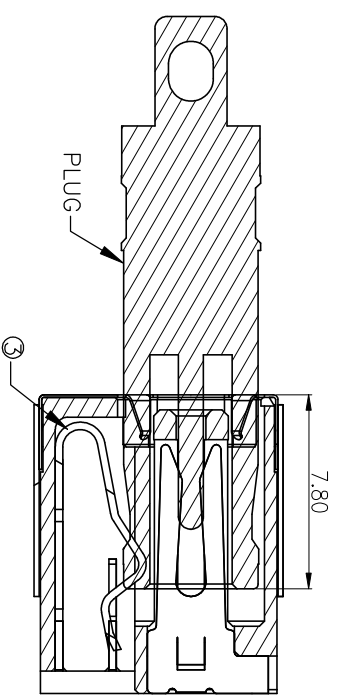
Simula Technology Inc.
 JUN 26. 2015
D.C.C. ISSUED



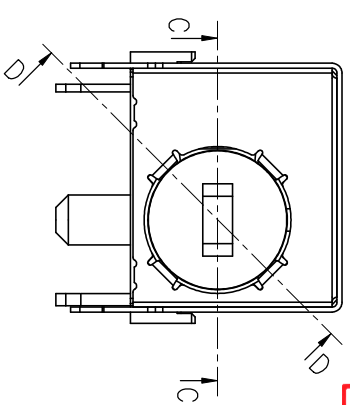
SECTION D-D



SECTION C-C



SECTION C-C



① DUMMY PIN	STAINLESS STEEL 0.5t		TIN 100u" MIN. OVER NI 50u" MIN.	1
② SHELL	COPPER ALLOY 0.3t		BLACK NI 30u" MIN.	1
③ SHELL COVER	STAINLESS STEEL 0.1t		SOLDERABLE NI 50~180u" MIN.	1
④ M3	COPPER ALLOY 0.3t			1
⑤ M4	COPPER ALLOY 0.3t			1
⑥ CENTER PIN	COPPER ALLOY 0.5t		UL94V-0 BLACK	1
⑦ HOUSING	HIGH TEMP PLASTIC			1

ITEM DESCRIPTIONS

UNLESS OTHERWISE SPECIFIED DIMENSIONS ARE IN MILLIMETERS
TOLERANCE ARE :
FRACTION DECIMALS ANGLES

LEAD-FREE
 HALOGEN-FREE

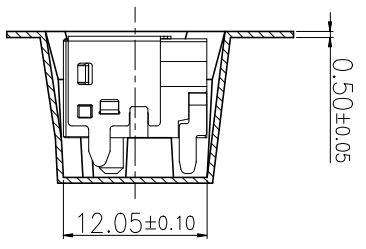
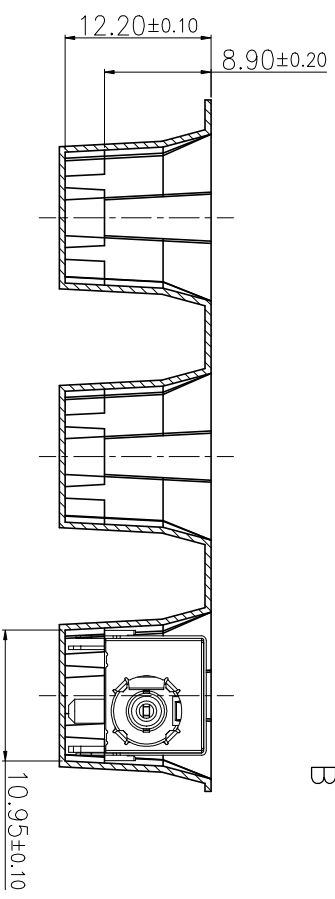
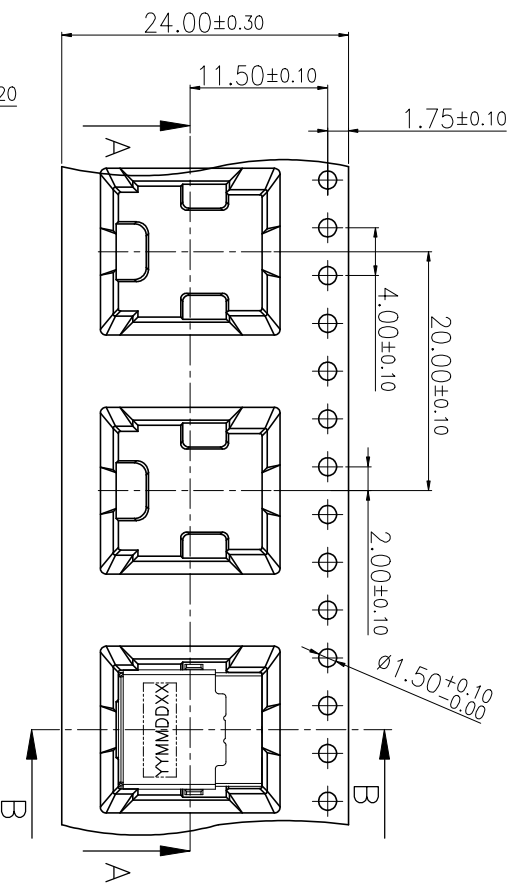
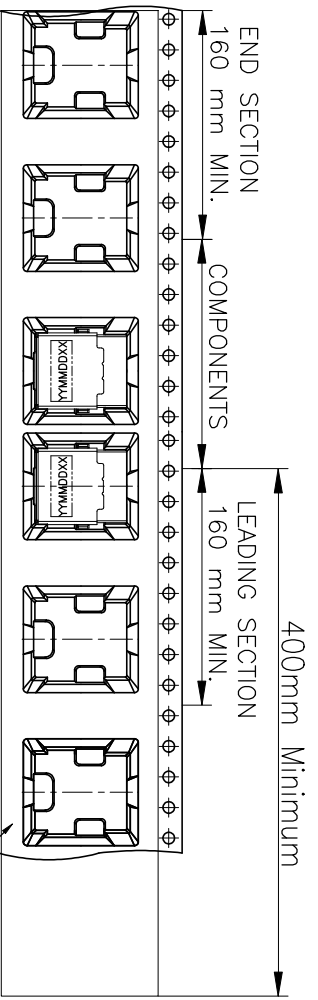
APPROVALS

APPROVALS	DATE	TITLE
DRAWN CL	2015/05/21	
CHECKED ANDY	2015/05/21	DC POWER JACK
APPROVED JIM	2015/05/21	

PART NO. AV296B-3100-412

SCALE 2.5:1 UNIT MM SHEET 3/4

CUSTOMER

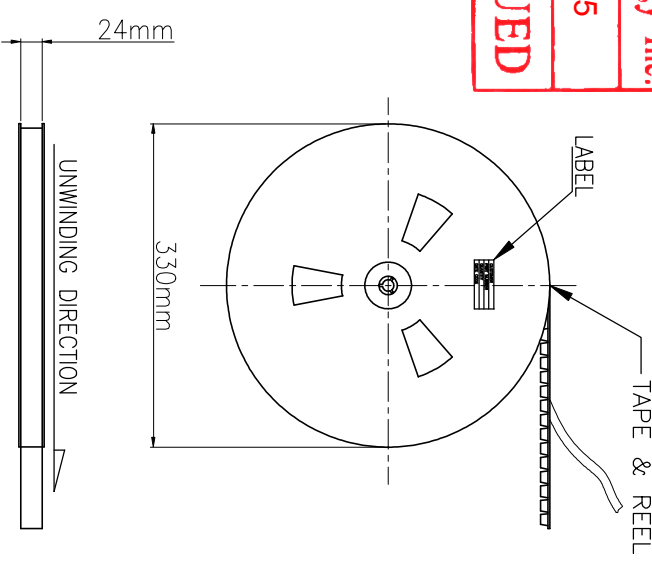
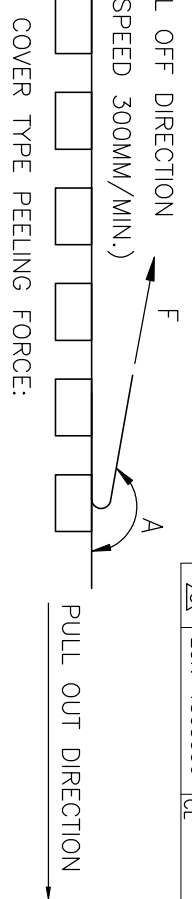


Simula Technology Inc.

JUN 26. 2015

D.C.C. ISSUED

A	165°~180°
F	35-125g



SECTION B-B

NOTES:

1. 10 SPROCKET HOLE PITCH CUMULATIVE TOLERANCE ± 0.20 .
2. CARRIER CAMBER IS WITHIN 1 mm IN 250 mm.
3. MATERIAL: TRANSPARENT CONDUCTIVE POLYSTYRENE ALLOY
4. ALL DIMENSIONS MEET EIA-481-D REQUIREMENTS.
5. THICKNESS : 0.50 \pm 0.05mm.
6. COMPONENT LOAD PER 13" REEL 250 PCS

UNLESS OTHERWISE SPECIFIED DIMENSION ARE IN MILLIMETERS TOLERANCE FRACTION DECIMALS ANGLES

X	± 0.2	X'	± 5°
XX	± 0.15	X''	± 3°

HALOGEN-FREE
 LEAD-FREE
 3rd ANGLE PROJECTION

APPROVALS	DATE	TITLE
BRMM	2015/05/21	
CL	2015/05/21	
CHECKED	2015/05/21	SIZE VERSION
ANDY	A4	C
APPROVED	2015/05/21	SCALE
JIM	C	3:1

PART NO. AJ296B-3100-412
 DC POWER JACK
 SHEET 4/4

CUSTOMER

SECTION A-A

REV.	PART-NO.	ISSUED
△	PDR-13N340	2014/09/01
△	DCN-1409001	CL
△*4	ECN-1505006	2015/05/21
		CL